



Office / Frost Moon

Fun Design Studio

工作室 / 霜月
方構制作空間設計



主要設計 彭任民
攝影 Dayform Studio 日形影像 | 採訪 rippling

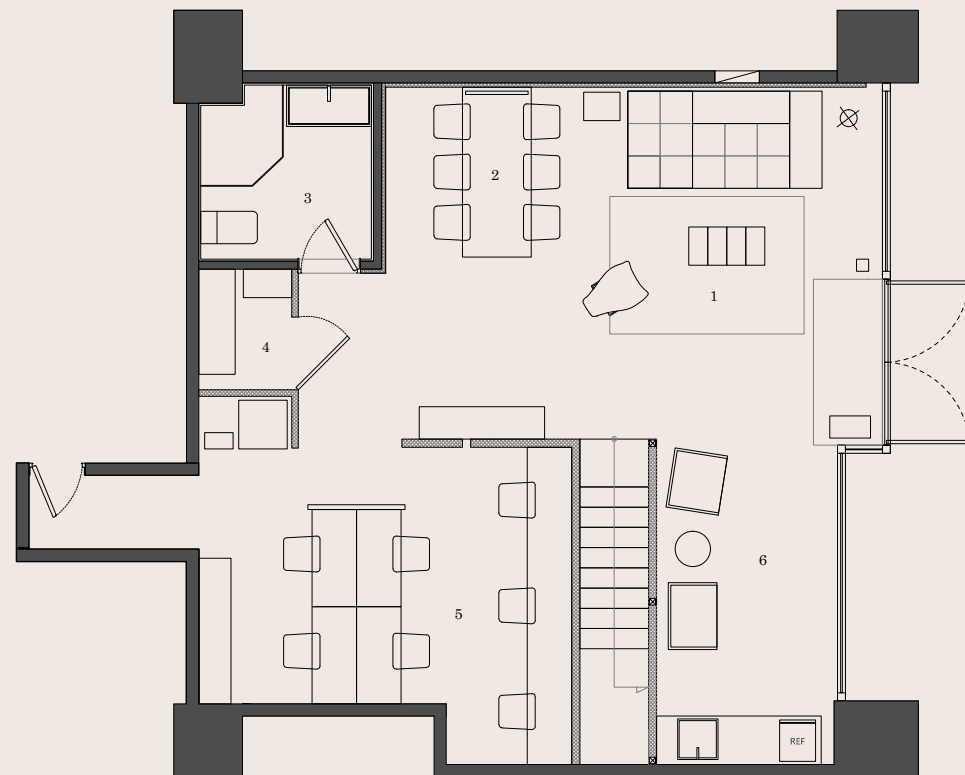
「在滑雪的時候，四周會突然變得很安靜，只會聽到風切聲。接著，你能見到遼闊、純淨的畫面。」設計師彭任民，分享他在滑雪場上的心流體驗。他希望這樣的放鬆感受，能重現在自己設計的辦公空間之中，於是，他也在身兼展示功能的新辦公室裡，打造了一個寧靜雪場。空間裡，有著大片的白色牆面、炭黑地板，以及簡單的線性與比例分割。乾淨的色彩、線條與材質，為這個空間打造單純的基底，使人在裡頭，能淨空紛擾思緒，沉靜下來，專注於此時此刻。當下，饒富自然生機。大片玻璃開窗，引入庭院的綠意，模糊內外分界，也開闊了視野。木質調家具、藤編地毯，也捎帶了天然的輕鬆氣息。而說起自然元素，空間裡最難以遺漏的，即是懸在招待區上方的月球燈了。

這盞燈，是彭任民在設計新辦公室之前，直覺決定採用的物件。「我覺得，它在晚上開啟的時候，非常療癒，有一種很明顯放鬆的感覺。」月色照耀在寧靜的雪地里，暖光讓白牆顯得更為溫柔。想必，這裡的每一個夜晚，都能讓人迷醉。在朝氣的

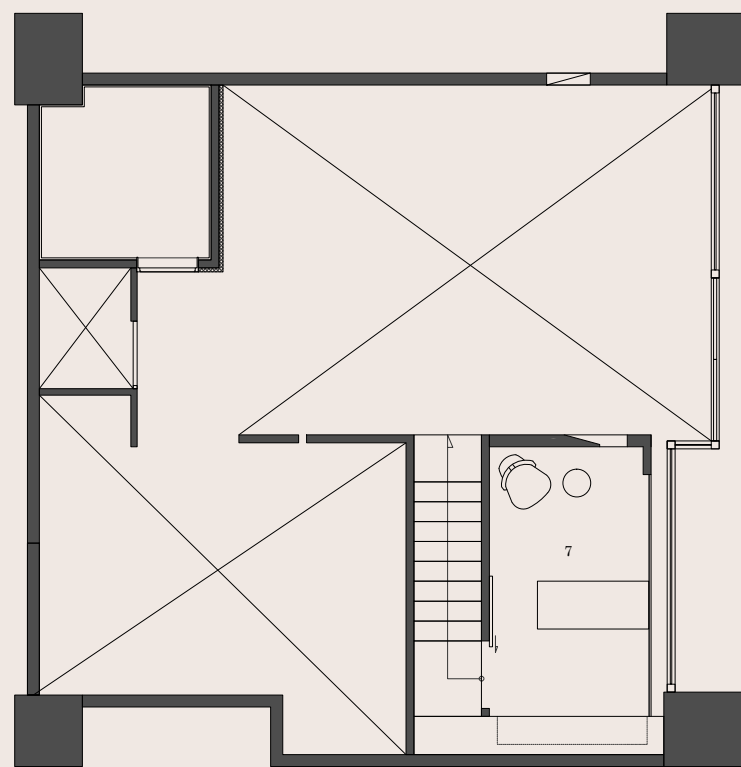
白天，掩去光芒的白色月球燈，而刻意挑高的接待區，並未以其巨大的量體，對空間什物展露出一絲侵略。於是，設計師能隨心所欲，挑選現下喜愛的家具搭配。倘若往後，在這個純粹的空間裡，要想置換家具，它也能如同接待區的模組沙發一樣，輕易融入不同風格。元素過於單一，反而不利於平靜，也顯得乏味。猶如滑雪總有起伏一般，設計師在空間中創造夾層，除了給予自己專注的機能場域，讓同事更能自在活動，更營造了視覺感。顧及寵物安全的隧道感階梯，那框景立體的斜面開口，與夾層閣樓的斜切立面帶來有趣的對話與穿透視角，同時也讓上下層之間有更多互動的可能。

此外，設計師輕點細節，讓空間添增一番趣味。會議桌上方龐大的大樓管線難題，為長條形的高低層次所消弭，且能不帶過於龐大壓迫的量體感；招待區的白牆，以線性切割隱去了電表箱的存在；茶水區選用有肌理的防濺牆，四處皆綴著不鏽鋼五金的冷光金屬質地。或許，當我們停佇在雪霜之月下細細品味，也能在寂靜之中，感受到如斯豐富的細微樂趣。

一樓平面圖 GROUND FLOOR PLAN



夾層平面圖 MEZZANINE PLAN



- 1 招待區
- 2 會議區
- 3 衛生間
- 4 儲藏室
- 5 辦公區
- 6 茶水間
- 7 設計師辦公區

- 1 Reception area
- 2 Meeting area
- 3 Restroom
- 4 Storage room
- 5 Office area
- 6 Pantry
- 7 Designer office area



空間性質 工作室
 空間面積 69.5 平方公尺
 使用建材 超耐磨木地板 / 不鏽鋼 / 天然木皮 / 磁磚
 座落位置 台北

Character of Space Office
 Gross Floor Area 69.5 m²
 Materials Laminate Flooring / Stainless Teel / Natural Veneer / Tiles
 Location Taipei

Principal Designer David Peng
 Photography Dayform Studio | Interview rippling

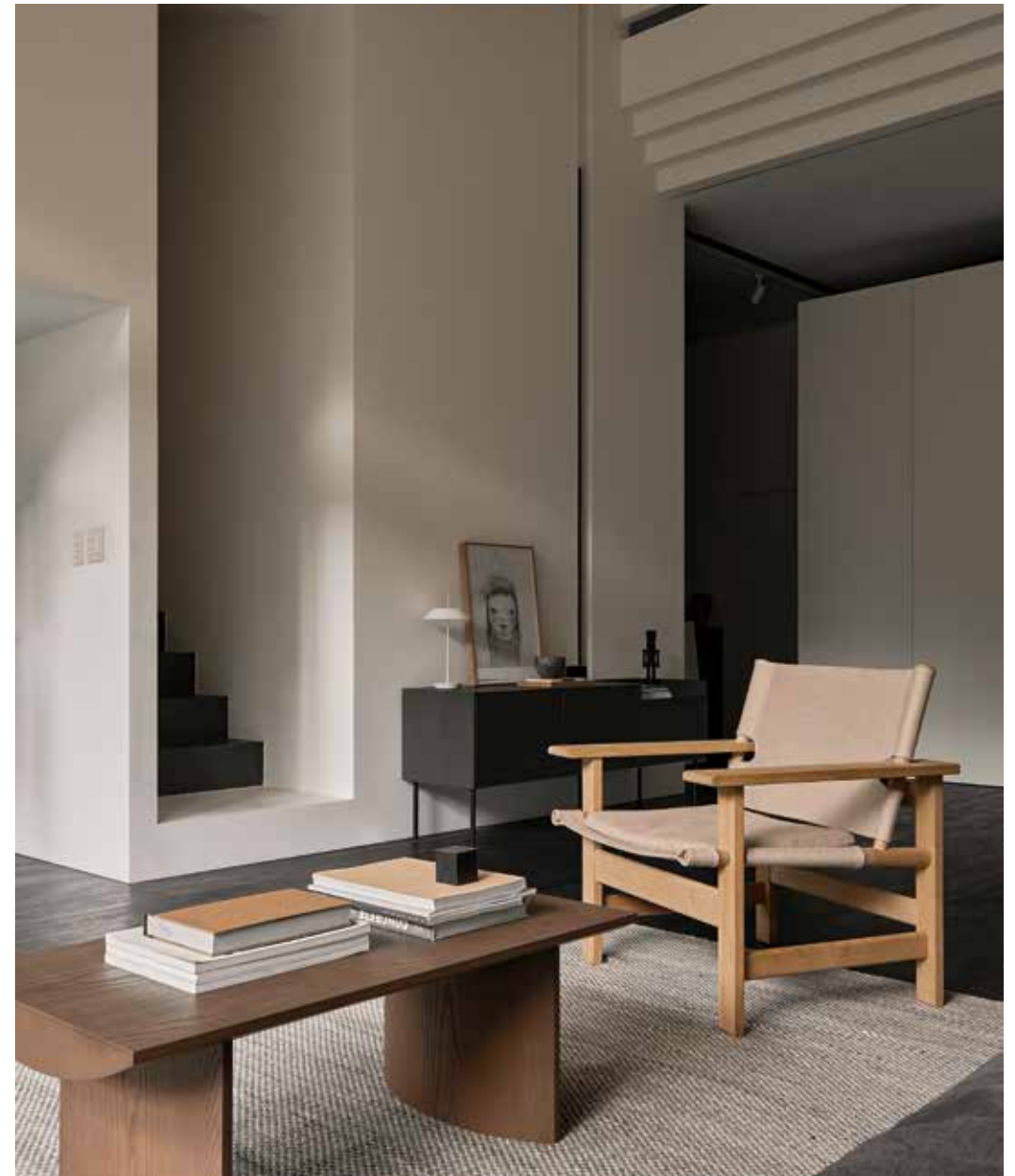


"While skiing, everything suddenly becomes very quiet, and you can only hear the sound of the wind. Then, you are greeted with vast, pristine scenery." Designer David Peng shares his flow experience on the ski slopes. He hopes to recreate this sense of relaxation in the office spaces he designs. Consequently, he has created a serene snowfield in his new office, which also serves as a showroom. The space features expansive white walls, charcoal black floors, and simple linear and proportional divisions. Clean colors, lines, and materials create a pure foundation for the space, allowing occupants to clear their minds of distractions, find tranquility, and focus on the present moment.

The present moment is brimming with natural vitality. Large glass windows bring in the greenery from the courtyard, blurring the boundaries between indoors and outdoors, and broadening the view. Wooden furniture and woven rattan rugs add a touch of

natural relaxation. When it comes to natural elements, the most unmissable feature in the space is the moon lamp hanging above the reception area.

This lamp was an intuitive choice by David Peng before designing the new office. "I feel that when it is turned on at night, it is very soothing and creates a distinct sense of relaxation." The moonlight shining on the tranquil snowfield, with its warm glow, makes the white walls appear even softer. Surely, every night here will be enchanting. During the vibrant daytime, the white moon lamp, with its light concealed, and the intentionally elevated reception area, do not impose on the space despite their substantial size. This allows the designer to freely select and arrange favorite furniture pieces. In the future, if there's a desire to replace furniture in this pure space, it can seamlessly blend in with different styles, just like the modular sofa in the reception area.



An overly simplistic design can be counterproductive to tranquility and can appear dull. Just like the ups and downs of skiing, the designer created mezzanines in the space. These not only provide functional areas for focused work and allow colleagues to move around more freely but also add visual interest. The tunnel-like stairs, designed with pet safety in mind, feature angled openings and slanted surfaces that create intriguing dialogues and perspectives. This design fosters greater interaction between the upper and lower levels.

Additionally, the designer thoughtfully added details to bring a touch of interest to the space. The problem of large building pipes above the conference table was resolved with long, tiered shapes, eliminating any sense of overwhelming mass. In the reception area, linear cuts in the white walls conceal the electrical panel. The tea area features a textured backsplash, adorned with the cool metallic finish of stainless steel fixtures. Perhaps, as we pause and savor the details under the frosty moon, we can appreciate the rich and subtle delights in the tranquility.